

## DESCRIPTION

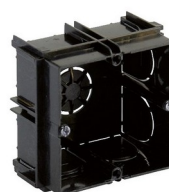
Wall-mounting boxes for Iddero touch panels.



E-C557



E-C620



E-C466



E-C456

## TECHNICAL SPECIFICATIONS

- Thermoplastic material, halogen-free
- Dimensional stability: -5 ... 60 °C
- Compliance:
  - 2014/35/EU (low voltage directive)
  - 2011/65/EU (RoHS directive)
  - Standards: UNE EN 60670-1

Ordering reference	Dimensions (mm)			Entries		Wall type
	Width	Height	Depth	Count	Ø (mm)	
E-C557	200	130	60	20	32	S
E-C620	275	186	56	10	32	S
E-C466	65	65	40	9	25	S
E-C456	Ø 68		46	4	20	H

S = Suitable for solid walls

H = Suitable for hollow walls (e.g. drywall, plasterboard)

Specifications subject to change without notice